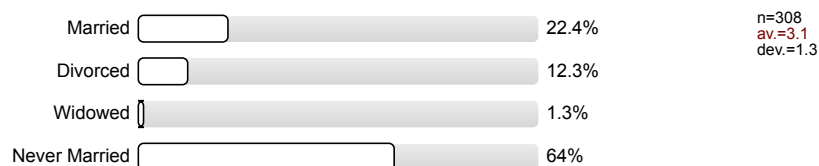
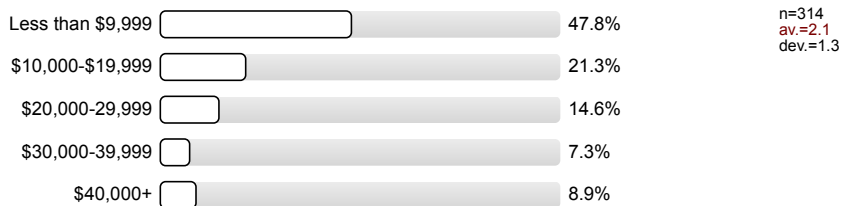


1.4) **Marital Status**



1.5) **Current Annual Income**



1.6) **Last enrollment status**



1.7) **Upon admission to SUSLA, were you a:**



1.8) **While attending SUSLA, did you require special accommodations (i.e., disability services)?**

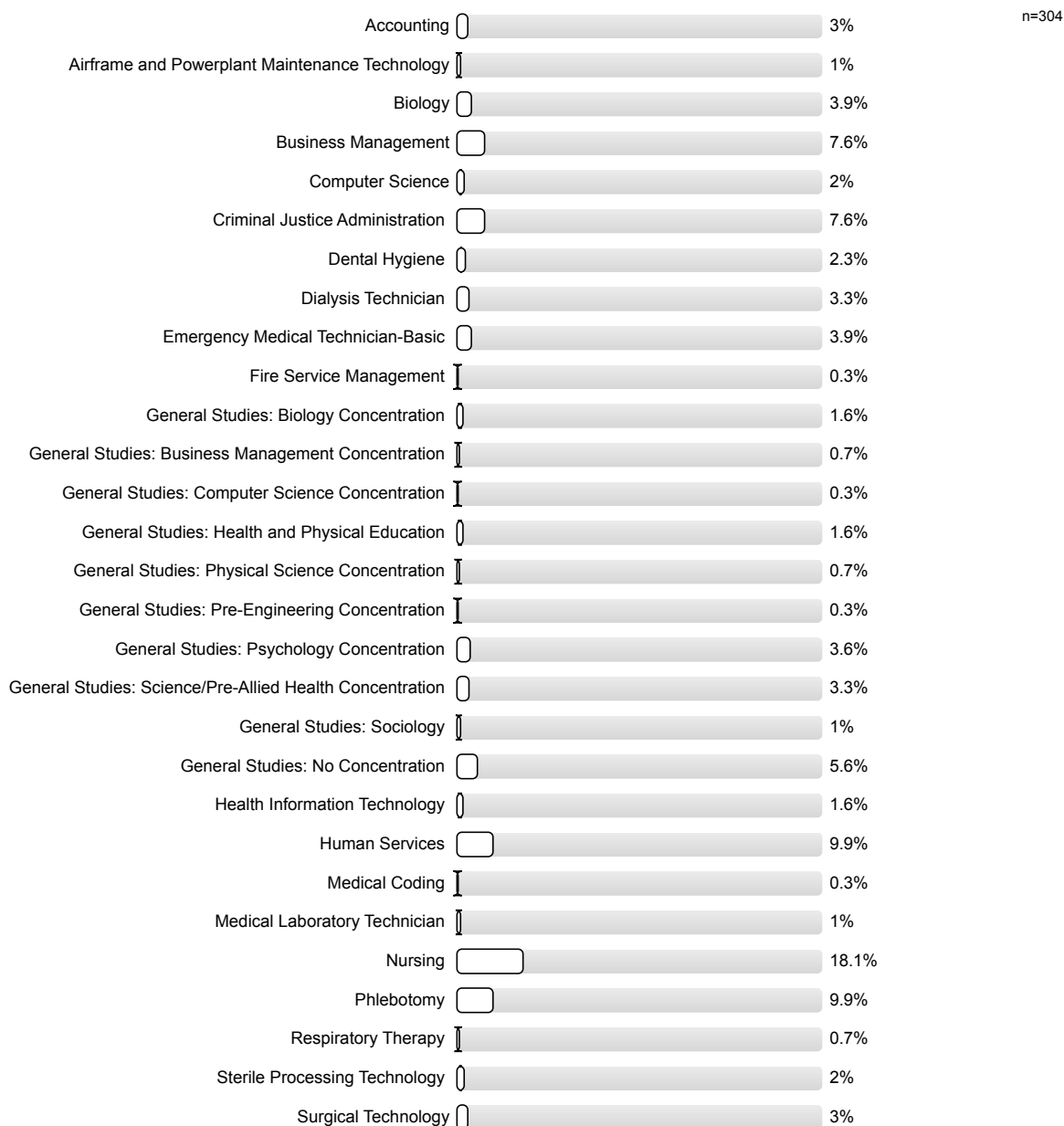


1.9) **Did you receive the accommodations that you requested?**

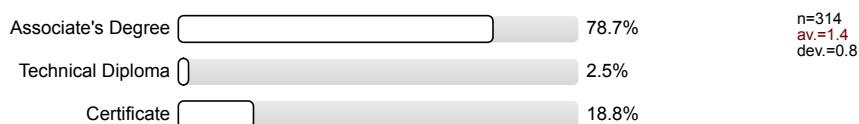


2. About Your Degree

2.1) Major



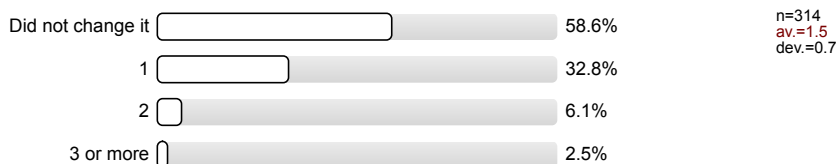
2.2) Degree Attained



2.3) While working on this degree, did you stop attending classes for at least one semester or more?



2.7) How many times did you change your major?

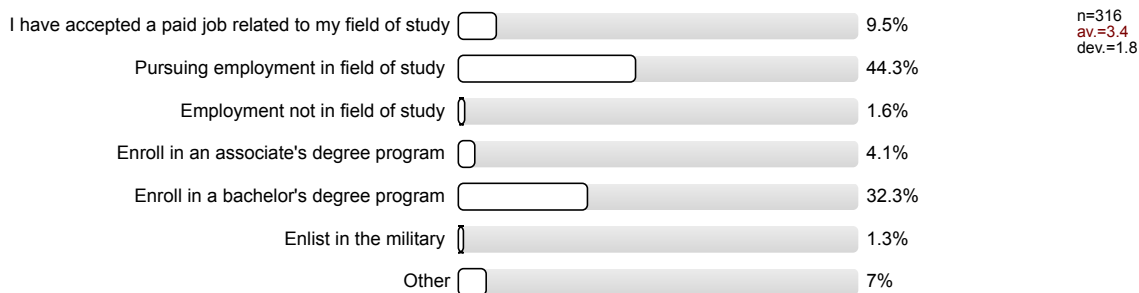


2.10) Were you aware of the course requirements needed to complete your program of study?



3. Plans After Graduation

3.1) What are your plans immediately after graduation (select the most appropriate response)?



4. Your First Year at SUSLA

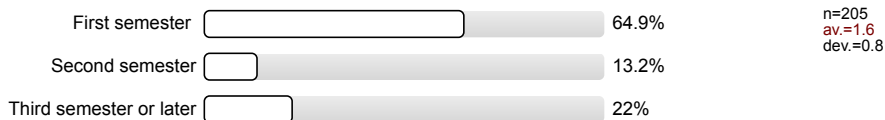
4.1) How would you rate your college experience during your first year at SUSLA?



4.2) Did you take a College Success Course?



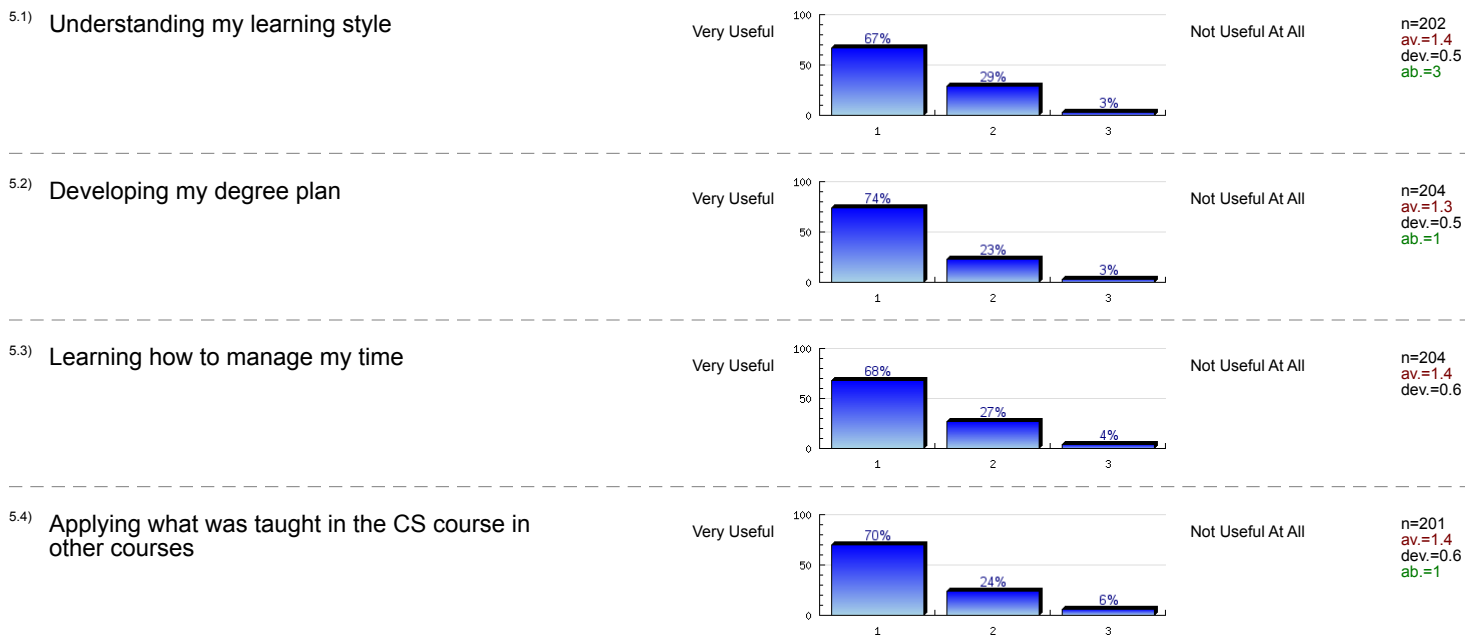
4.3) When did you take the College Success Course?



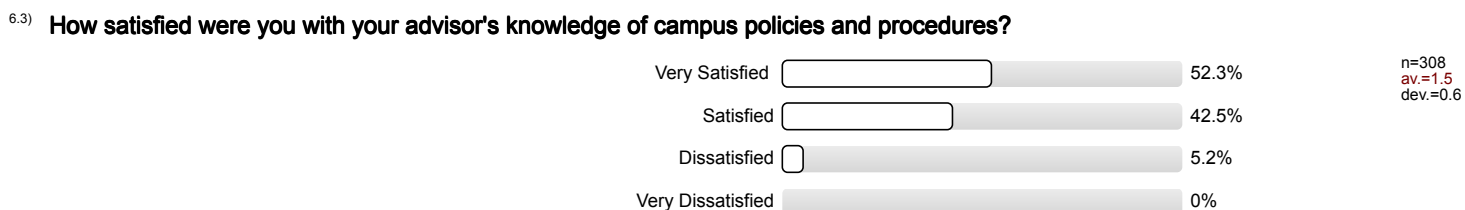
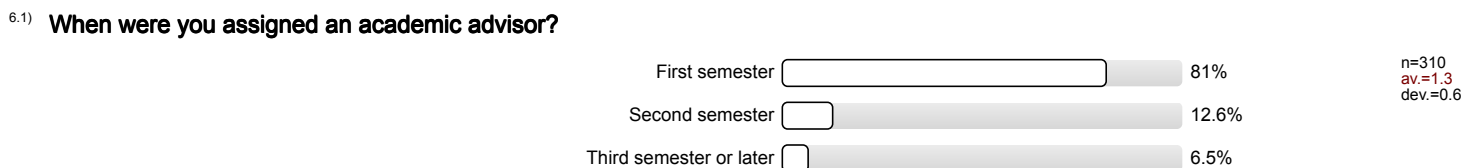
4.4) Did you find the College Success Course helpful in navigating your college experience?



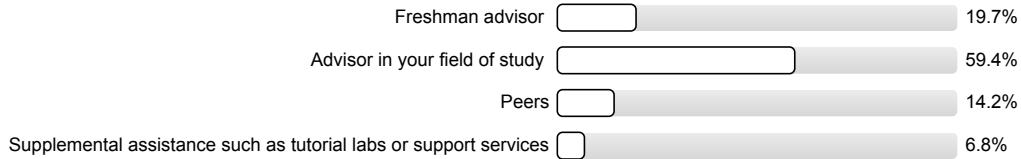
5. How useful were the following components of the College Success Course in contributing to your success at SUSLA?



6. Academic Advising



6.5) If you had to recommend the assistance that was most helpful to you, which would you recommend?

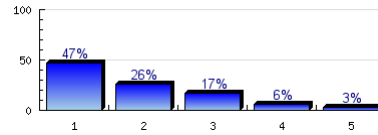


n=310
av.=2.1
dev.=0.8

7. Satisfaction with University and Academic Support Services

7.1) Availability of financial aid information

Very Satisfied

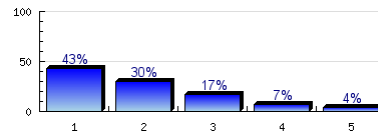


Very Dissatisfied

n=292
av.=1.9
dev.=1.1
ab.=21

7.2) Process of applying for financial aid

Very Satisfied

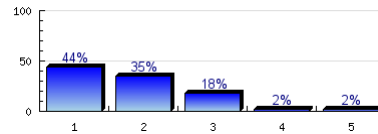


Very Dissatisfied

n=291
av.=2
dev.=1.1
ab.=21

7.3) Quality of admissions

Very Satisfied

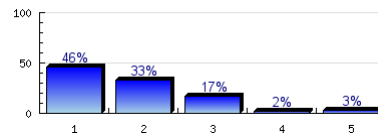


Very Dissatisfied

n=310
av.=1.8
dev.=0.9
ab.=1

7.4) Quality of registration

Very Satisfied

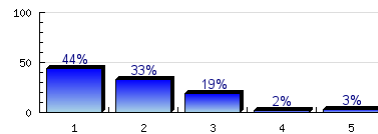


Very Dissatisfied

n=312
av.=1.8
dev.=0.9
ab.=1

7.5) Quality of services provided by fiscal offices (i.e., cashier's office, business office, etc.)

Very Satisfied

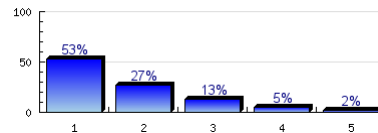


Very Dissatisfied

n=308
av.=1.9
dev.=1
ab.=3

7.6) Quality of services provided by the bookstore (i.e., book availability, receipt of book, etc.)

Very Satisfied



Very Dissatisfied

n=290
av.=1.7
dev.=1
ab.=16

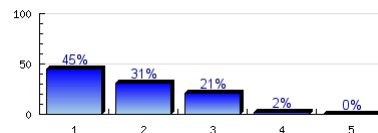
7.7) While at SUSLA, did you participate in experiences such as service learning, research, a learning community, or a capstone course?



n=286
av.=1.7
dev.=0.5

7.8) Level of satisfaction with **service learning**

Very Satisfied

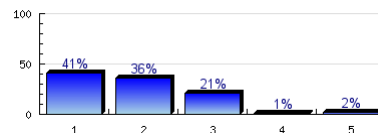


Very Dissatisfied

n=239
av.=1.8
dev.=0.9
ab.=55

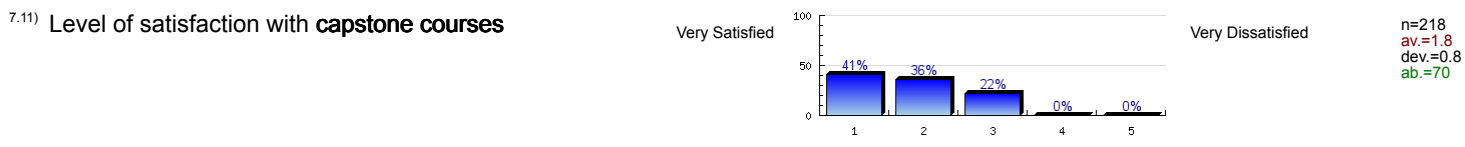
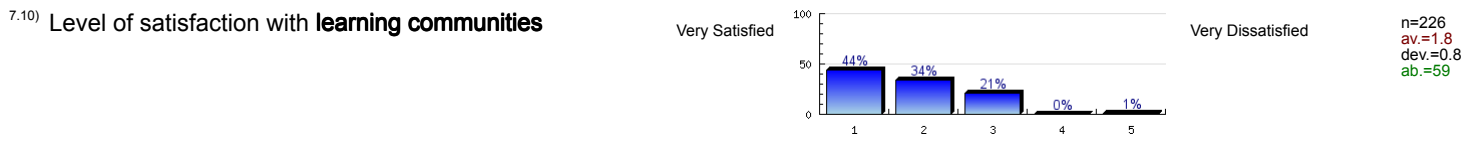
7.9) Level of satisfaction with **research**

Very Satisfied

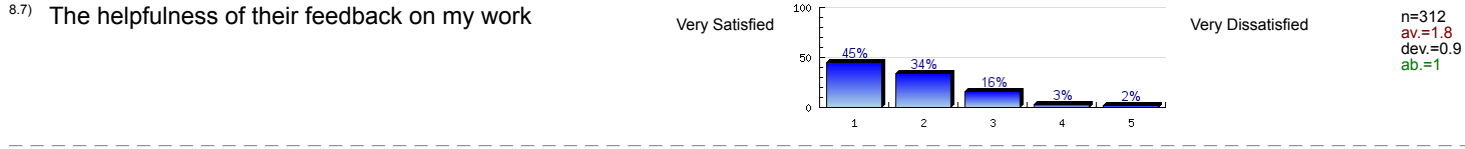
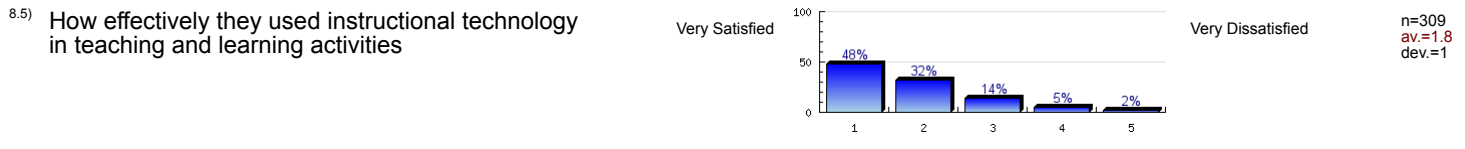
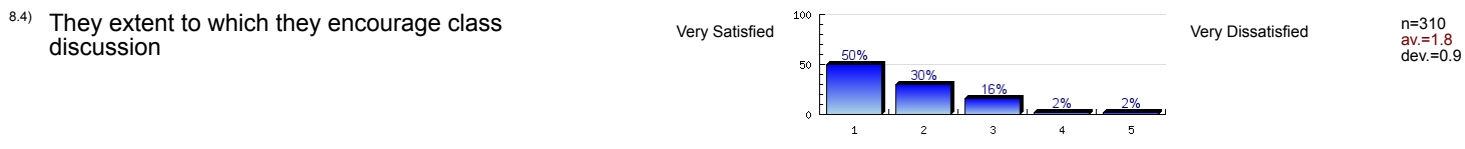
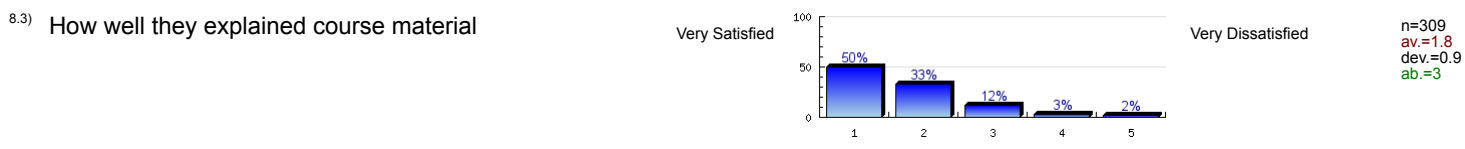
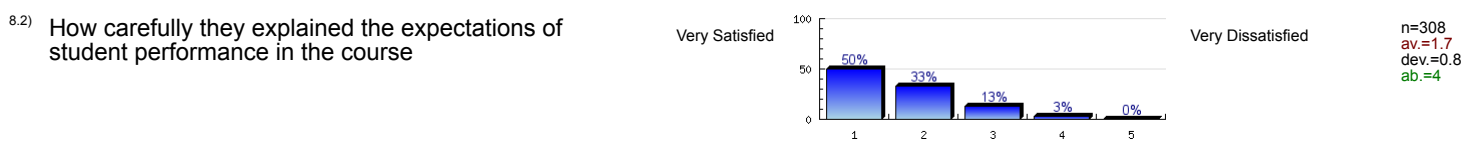
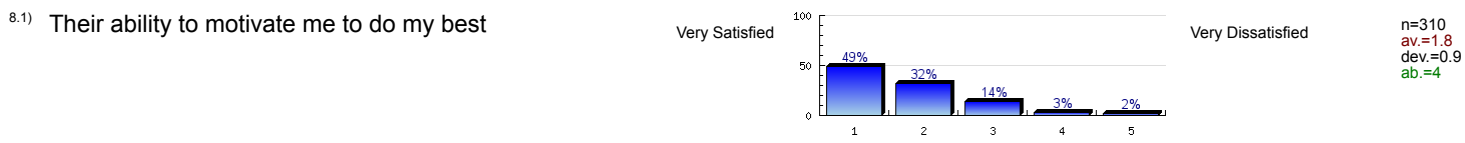


Very Dissatisfied

n=233
av.=1.9
dev.=0.9
ab.=56



8. Satisfaction with Instructors in Major



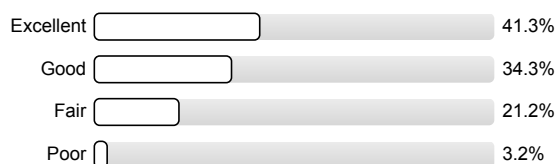
9. University Contribution to Knowledge, Skills and Personal Development

9.1) Writing effectively	Very Much		Not at All	n=302 av.=1.5 dev.=0.7 ab.=11
9.2) Speaking effectively	Very Much		Not at All	n=301 av.=1.5 dev.=0.8 ab.=11
9.3) Understanding written and oral information	Very Much		Not at All	n=310 av.=1.5 dev.=0.7 ab.=3
9.4) Using mathematical skills	Very Much		Not at All	n=307 av.=1.6 dev.=0.7 ab.=6
9.5) Using critical thinking skills	Very Much		Not at All	n=310 av.=1.4 dev.=0.6 ab.=3
9.6) Applying scientific methods of inquiry	Very Much		Not at All	n=306 av.=1.5 dev.=0.7 ab.=6
9.7) Experiencing personal growth (e.g., self-discipline, responsibility, self-awareness, etc.)	Very Much		Not at All	n=302 av.=1.5 dev.=0.7 ab.=2

10. Overall Thoughts About SUSLA

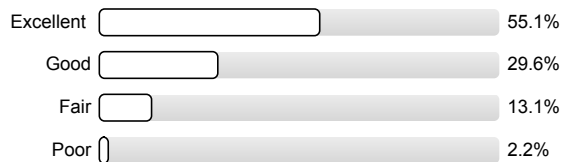
10.1) If you could start over, would you still choose to attend SUSLA?	Yes <input type="checkbox"/> 66% Not Sure <input type="checkbox"/> 22.2% No <input type="checkbox"/> 11.7%	n=315 av.=1.5 dev.=0.7
10.2) Would you recommend this institution to a friend considering college?	Yes <input type="checkbox"/> 72.2% Not Sure <input type="checkbox"/> 18.2% No <input type="checkbox"/> 9.6%	n=313 av.=1.4 dev.=0.7

10.3) How would you evaluate the overall quality of instruction at SUSLA?



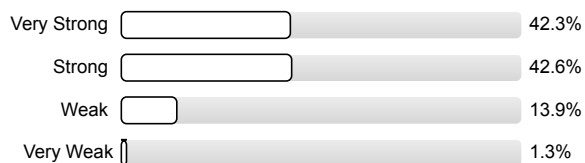
n=312
av.=1.9
dev.=0.9

10.4) How would you evaluate the overall quality of instruction at SUSLA **IN YOUR MAJOR?**



n=314
av.=1.6
dev.=0.8

10.5) How would you describe the learning environment on this campus?



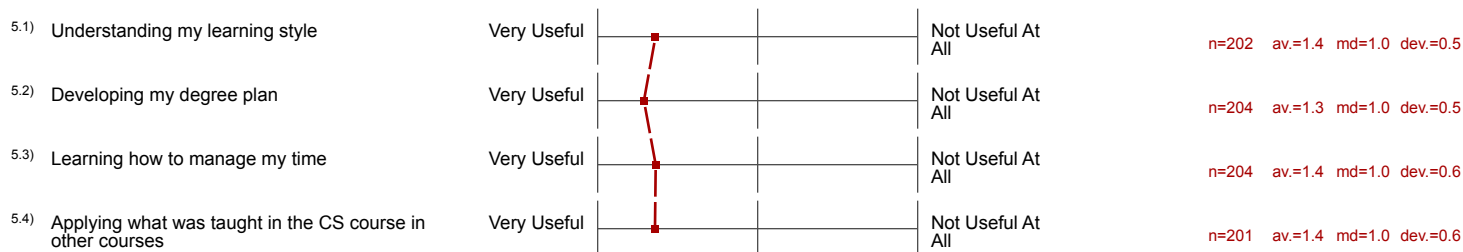
n=310
av.=1.7
dev.=0.7

Profile

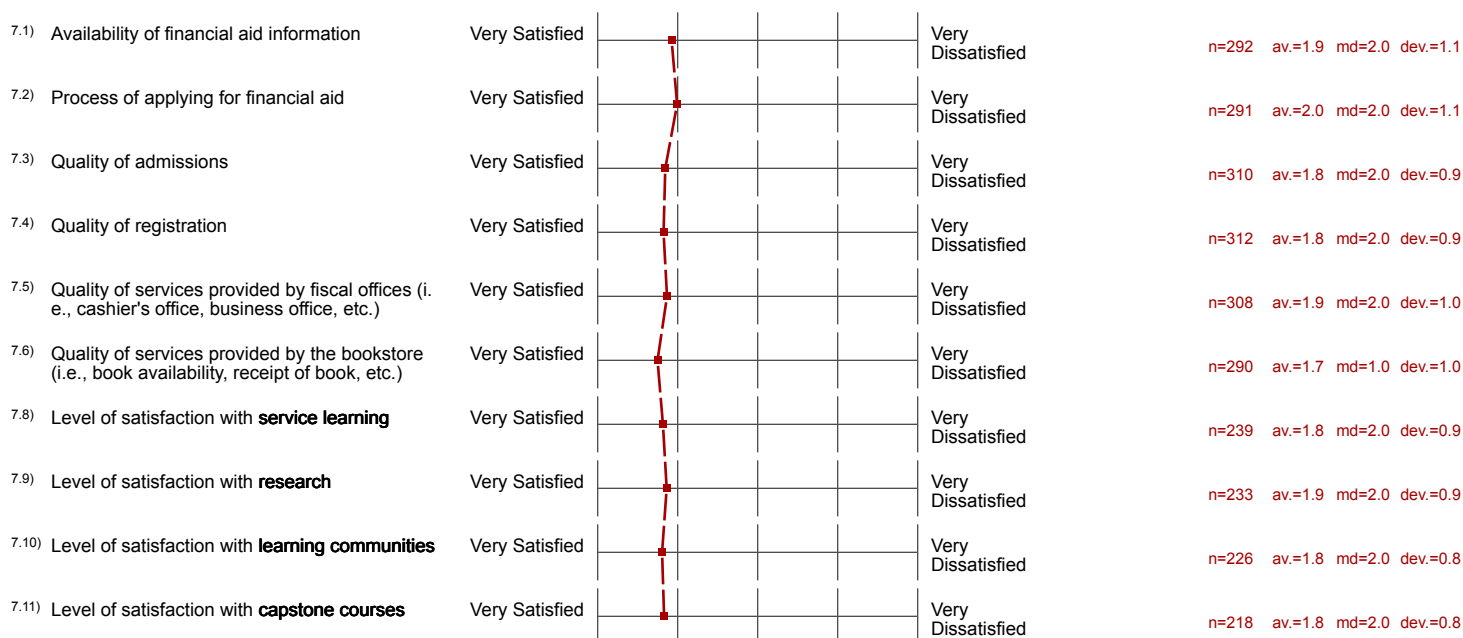
Compilation: Graduate Exit Survey 2016-2017

Values used in the profile line: Mean

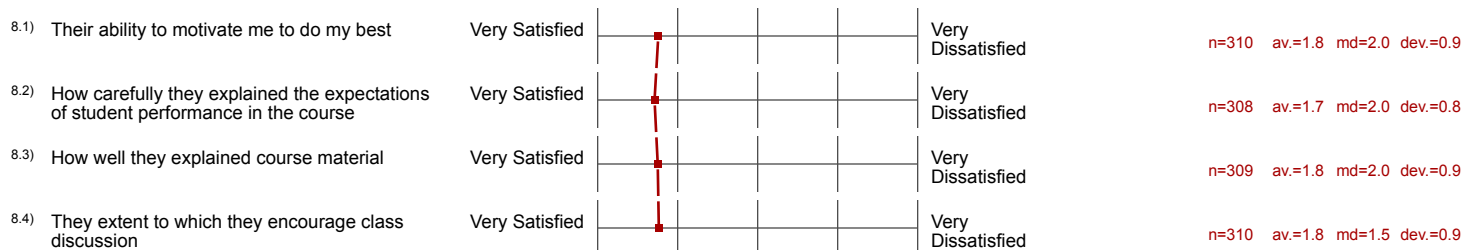
5. How useful were the following components of the College Success Course in contributing to your success at SUSLA?



7. Satisfaction with University and Academic Support Services



8. Satisfaction with Instructors in Major



8.5) How effectively they used instructional technology in teaching and learning activities	Very Satisfied		Very Dissatisfied	n=309 av.=1.8 md=2.0 dev.=1.0
8.6) How quickly they provided feedback on my work	Very Satisfied		Very Dissatisfied	n=313 av.=1.9 md=2.0 dev.=1.0
8.7) The helpfulness of their feedback on my work	Very Satisfied		Very Dissatisfied	n=312 av.=1.8 md=2.0 dev.=0.9
8.8) Overall satisfaction with instructors in your major	Very Satisfied		Very Dissatisfied	n=306 av.=1.7 md=2.0 dev.=0.9

9. University Contribution to Knowledge, Skills and Personal Development

9.1) Writing effectively	Very Much		Not at All	n=302 av.=1.5 md=1.0 dev.=0.7
9.2) Speaking effectively	Very Much		Not at All	n=301 av.=1.5 md=1.0 dev.=0.8
9.3) Understanding written and oral information	Very Much		Not at All	n=310 av.=1.5 md=1.0 dev.=0.7
9.4) Using mathematical skills	Very Much		Not at All	n=307 av.=1.6 md=1.0 dev.=0.7
9.5) Using critical thinking skills	Very Much		Not at All	n=310 av.=1.4 md=1.0 dev.=0.6
9.6) Applying scientific methods of inquiry	Very Much		Not at All	n=306 av.=1.5 md=1.0 dev.=0.7
9.7) Experiencing personal growth (e.g., self-discipline, responsibility, self-awareness, etc.)	Very Much		Not at All	n=302 av.=1.5 md=1.0 dev.=0.7